

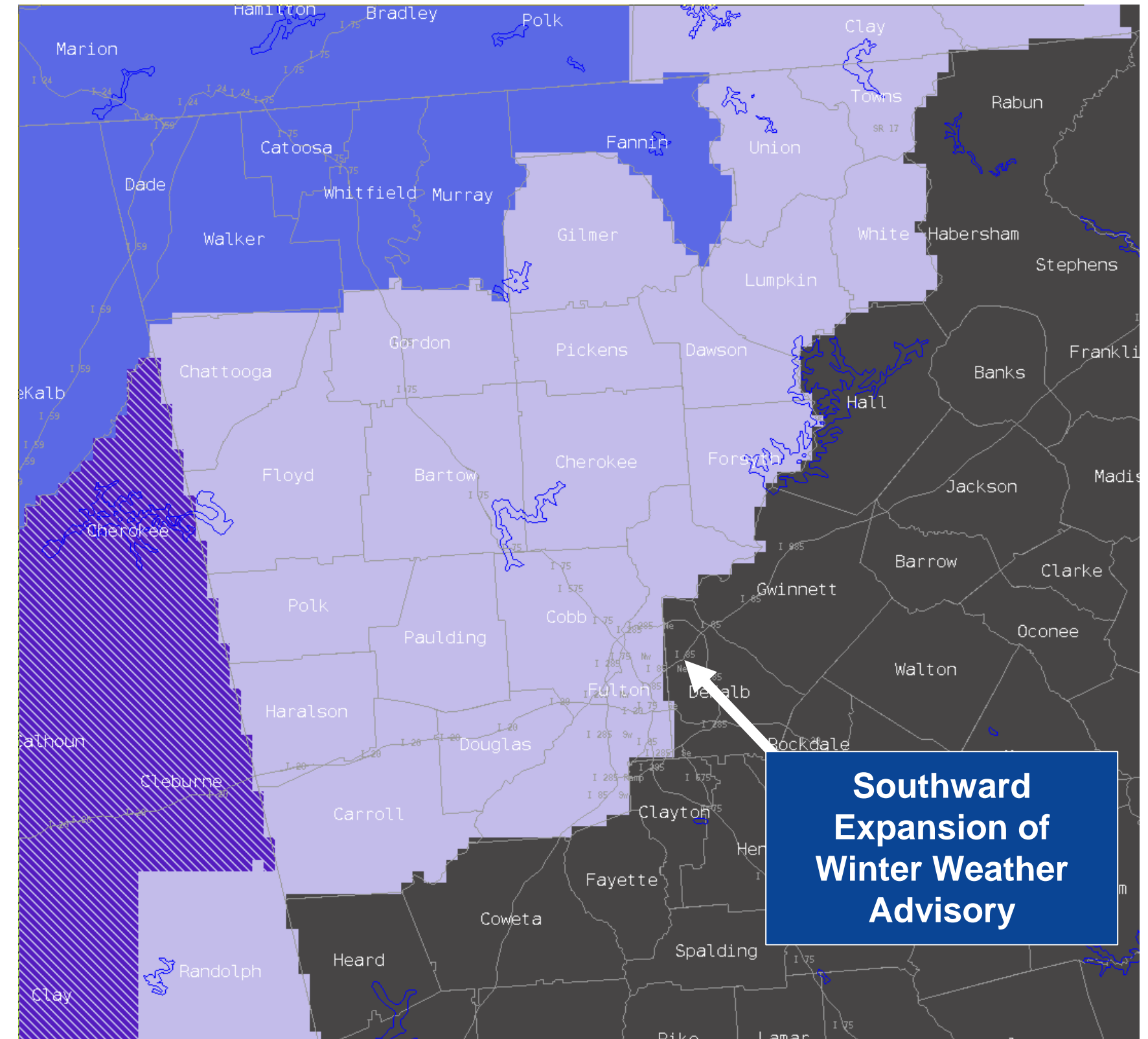
Main Highlights / Changes

January 15, 2024
1:55 PM

Through Tonight & Tuesday Afternoon

Important Forecast Updates

- Expanded Winter Weather Advisory to include north and west side of metro Atlanta (including downtown area) as light freezing rain/drizzle possible late tonight through early Wed morning
- Models tend to underestimate movement/progression of Arctic airmasses (shallow cold air)
- Wind Chill Advisory likely to be issued for tomorrow night/Wed morning (+5F to -10F)



Overall Forecast Confidence



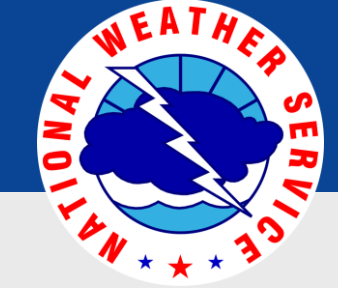
Low
High

Medium



National Oceanic and
Atmospheric Administration
U.S. Department of Commerce

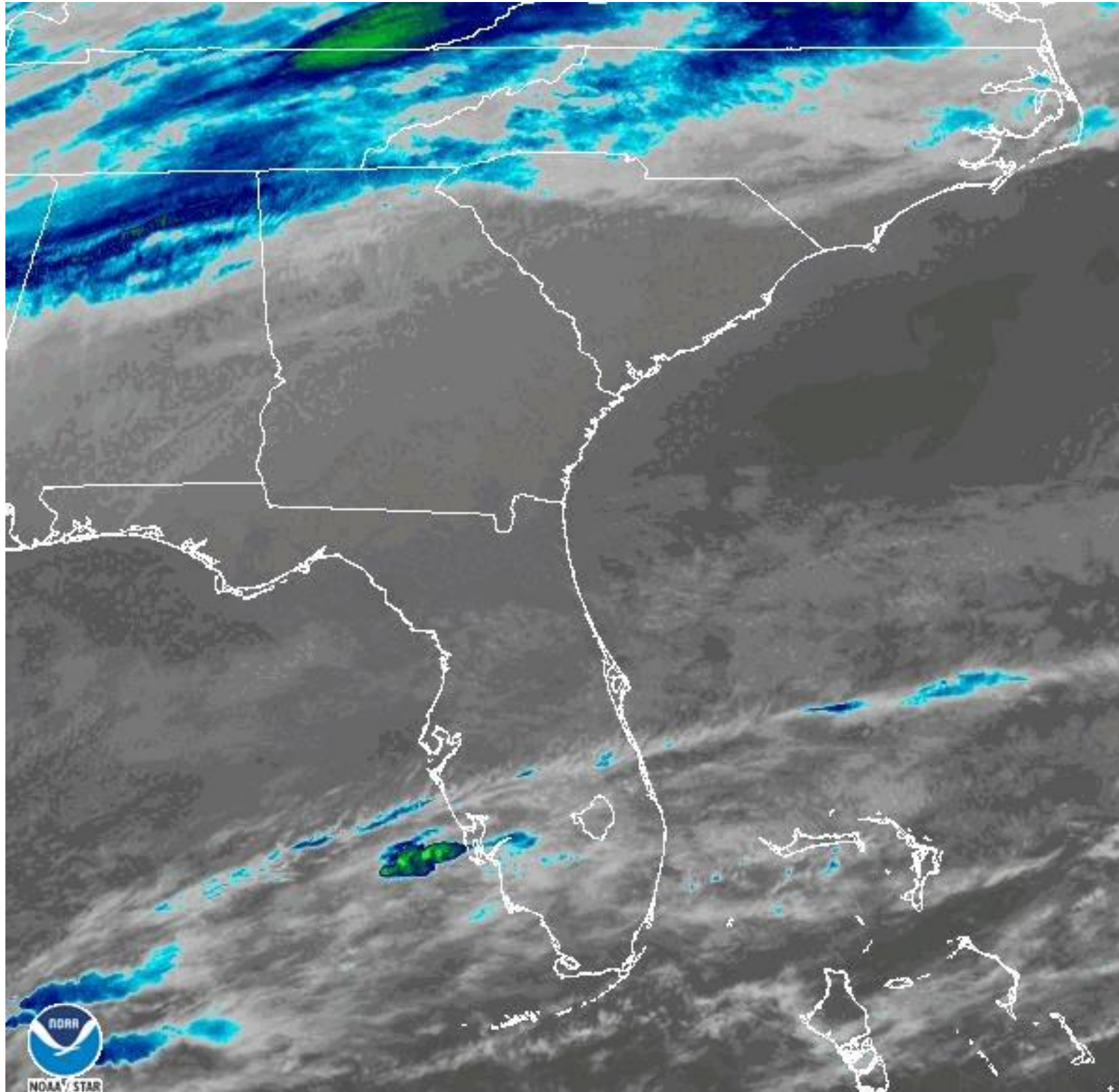
National Weather Service
Peachtree City, GA



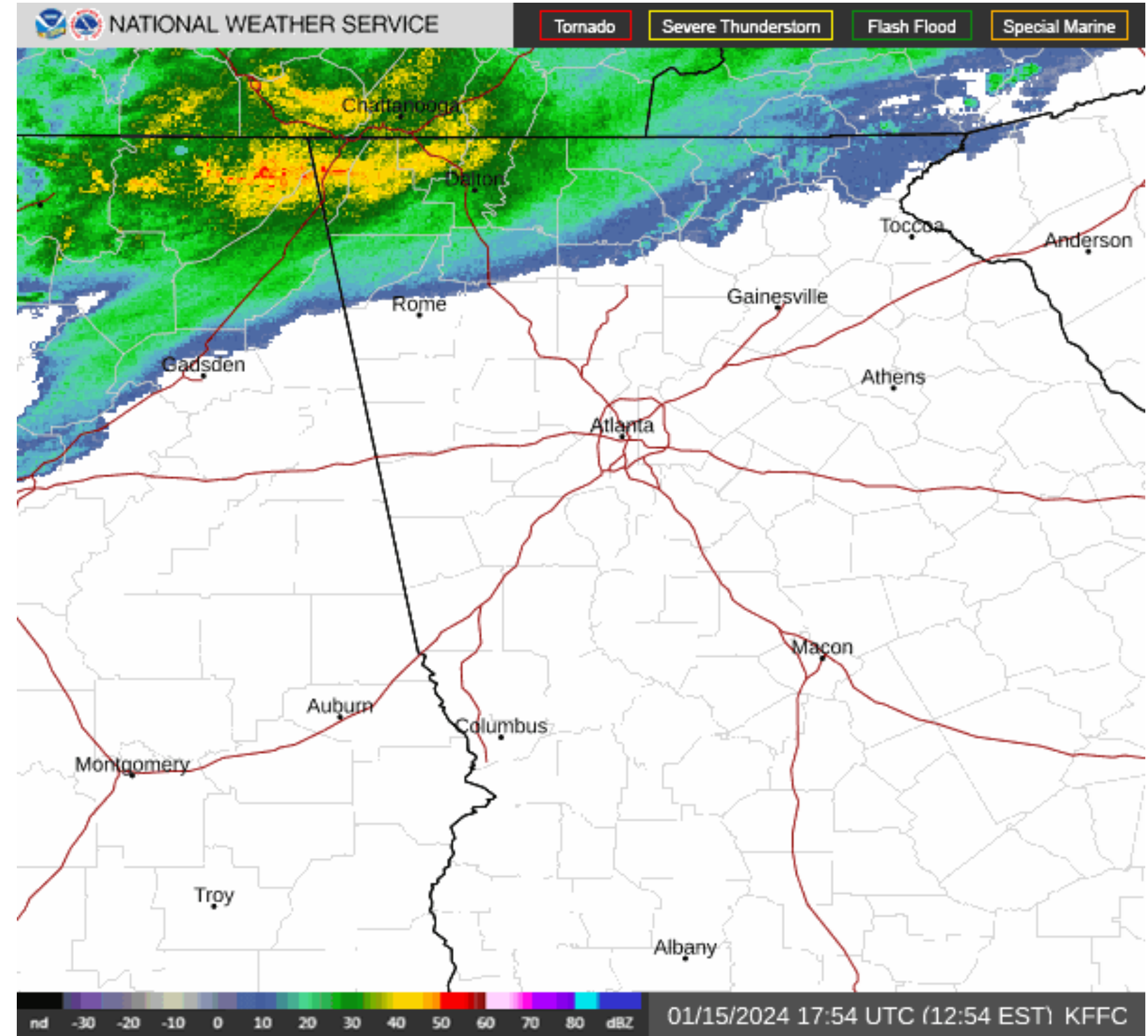
Latest Conditions - as of 12PM Mon

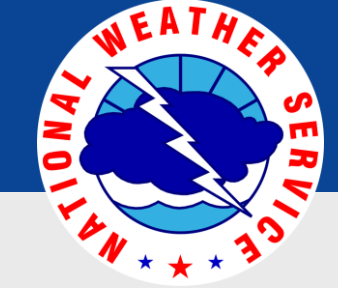
January 15, 2024
1:55 PM

Snow/sleet mix across far northwest GA



15 Jan 2024 13:51Z - NOAA/NESDIS/STAR - SE - Band 13

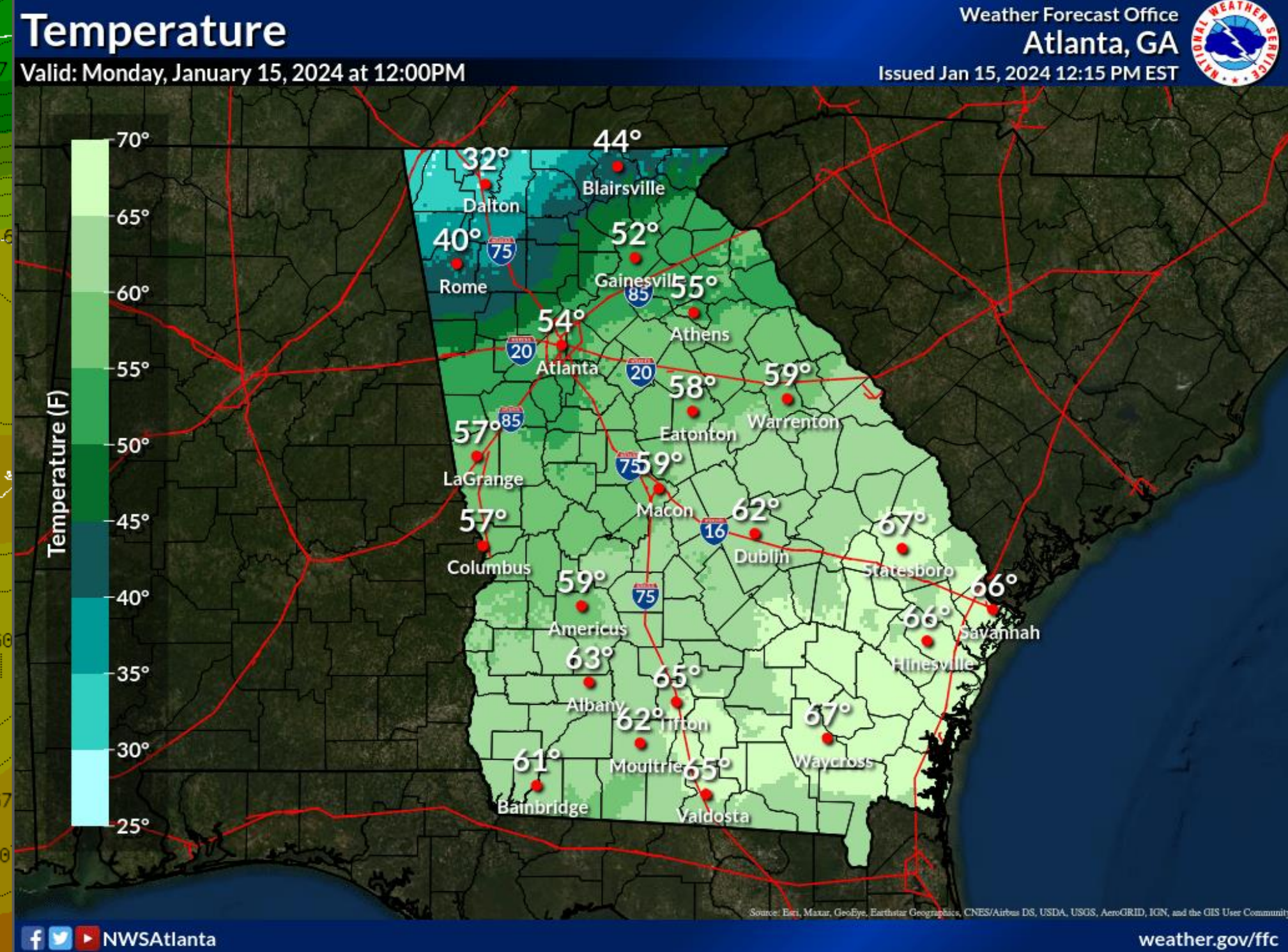
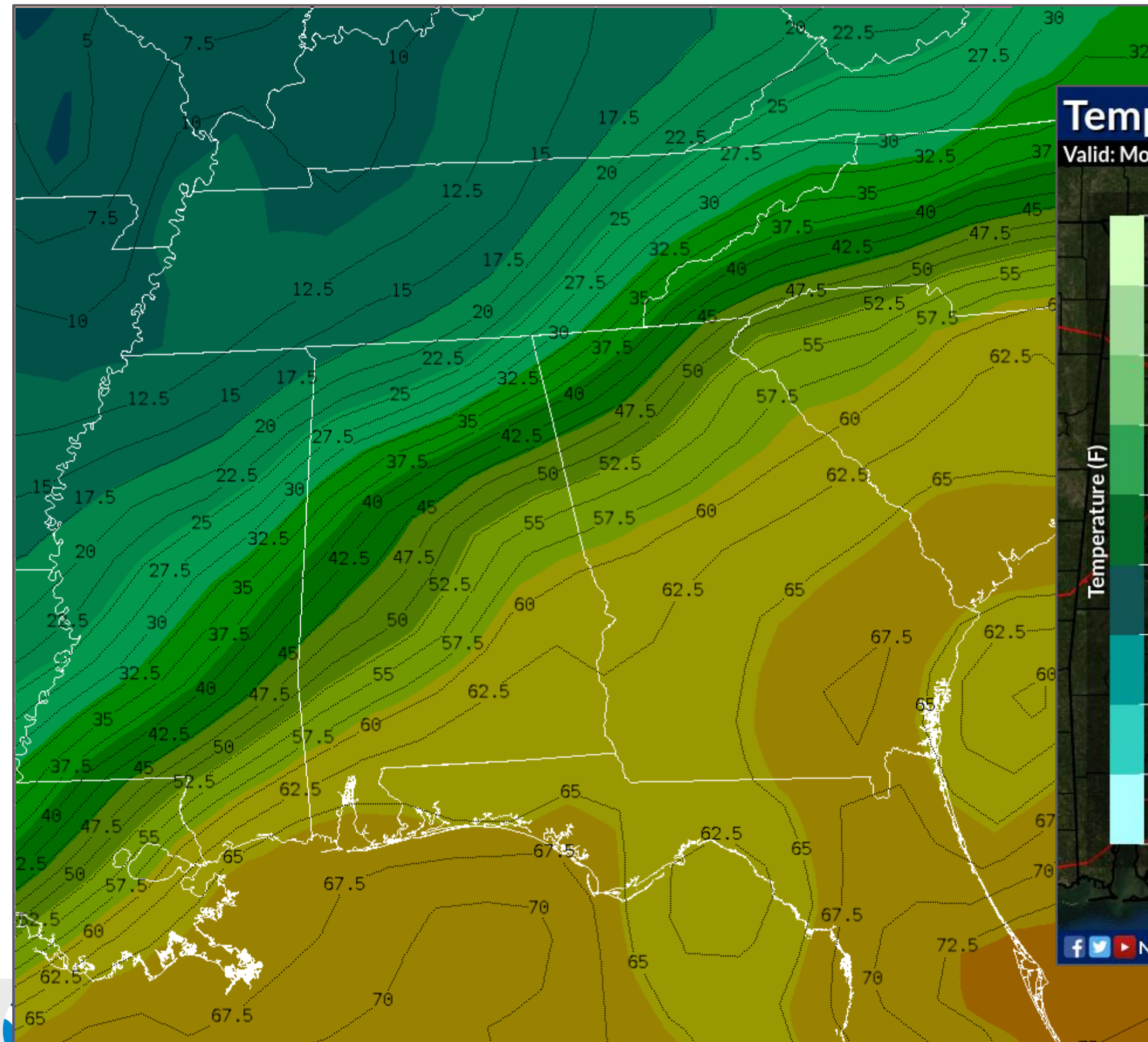


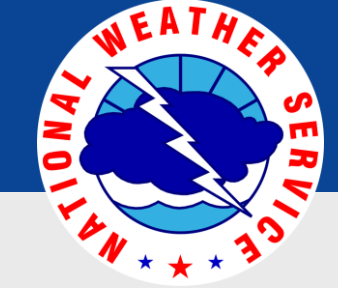


Temperatures - as of 12PM Mon

January 15, 2024
1:55 PM

Arctic Front across north Alabama/eastern Tennessee

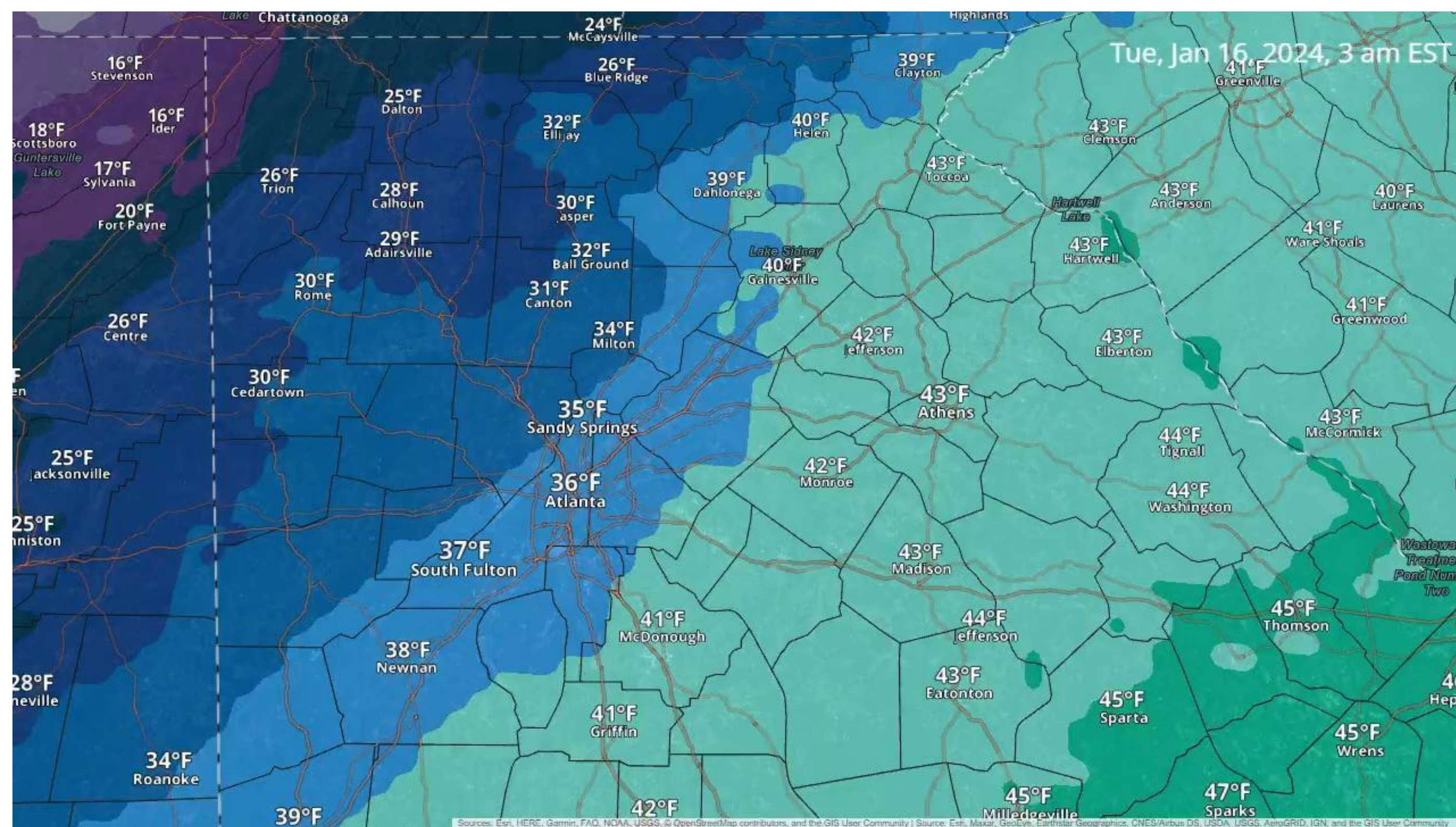




Temperatures

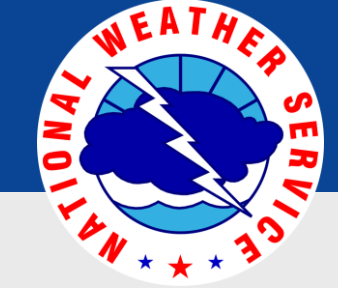
January 15, 2024
1:55 PM

Between 3AM (overnight) and 2PM Tuesday



- Temps falling quickly behind Arctic front
- Concern for icy/slick conditions with any precip that is falling (or has just fallen) in areas that drop below 29-30F degrees

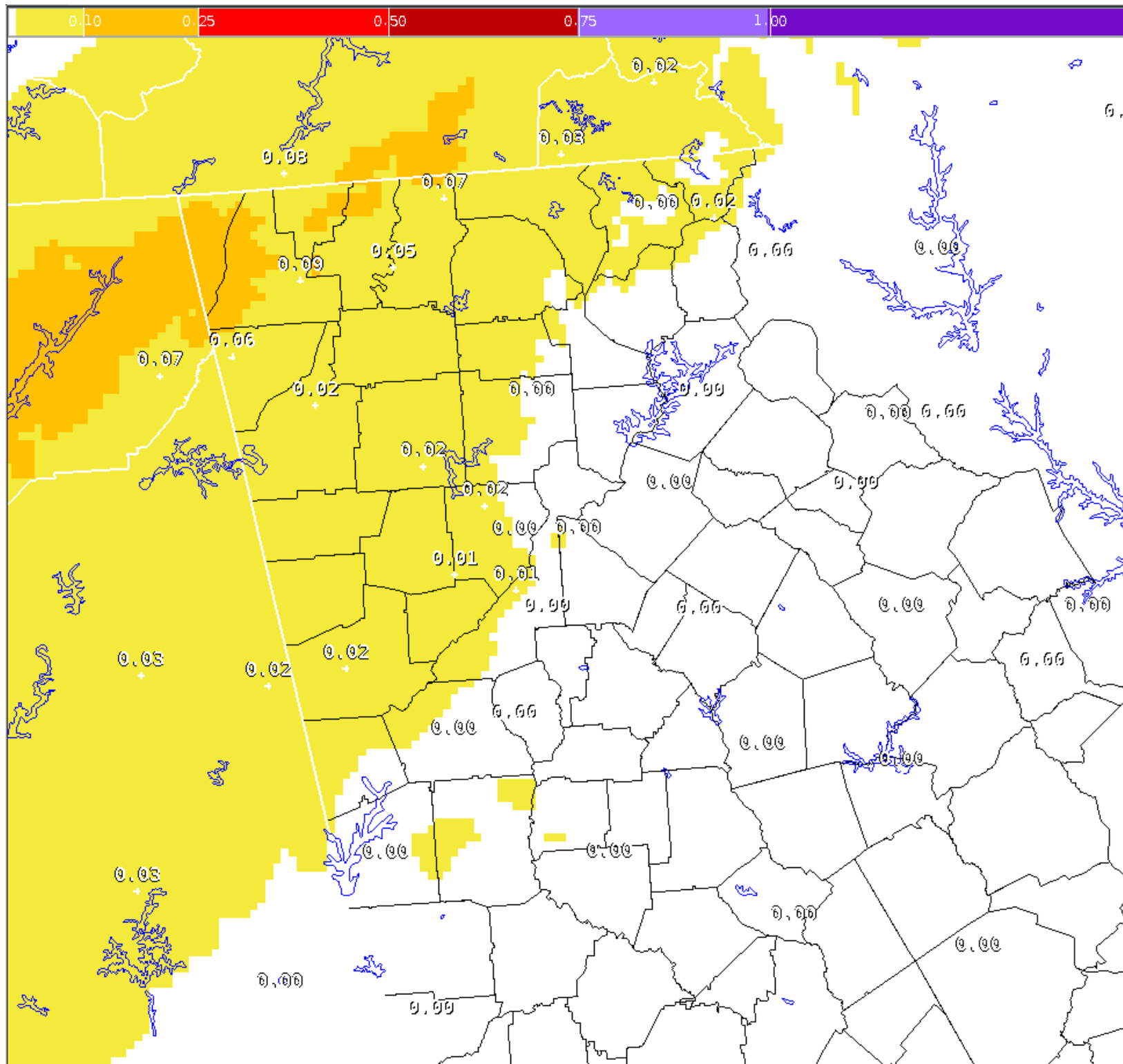




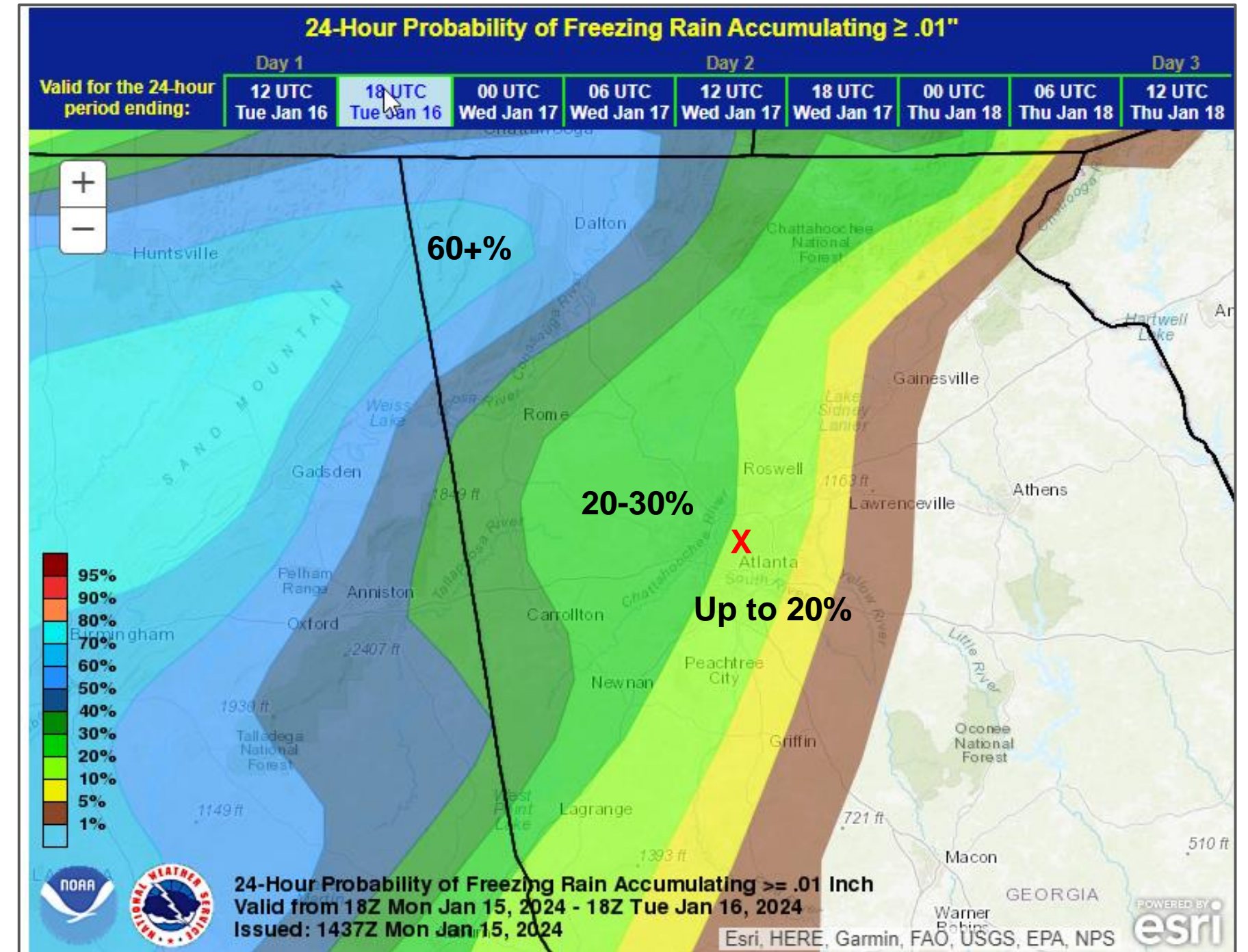
Potential Ice Accumulations

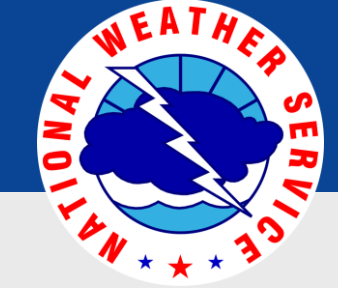
January 15, 2024
1:55 PM

Reasonable Worst Case = 10% of seeing this much



WPC National Guidance showing chances (%) of seeing ≥ 0.01 " freezing rain through Tues morning

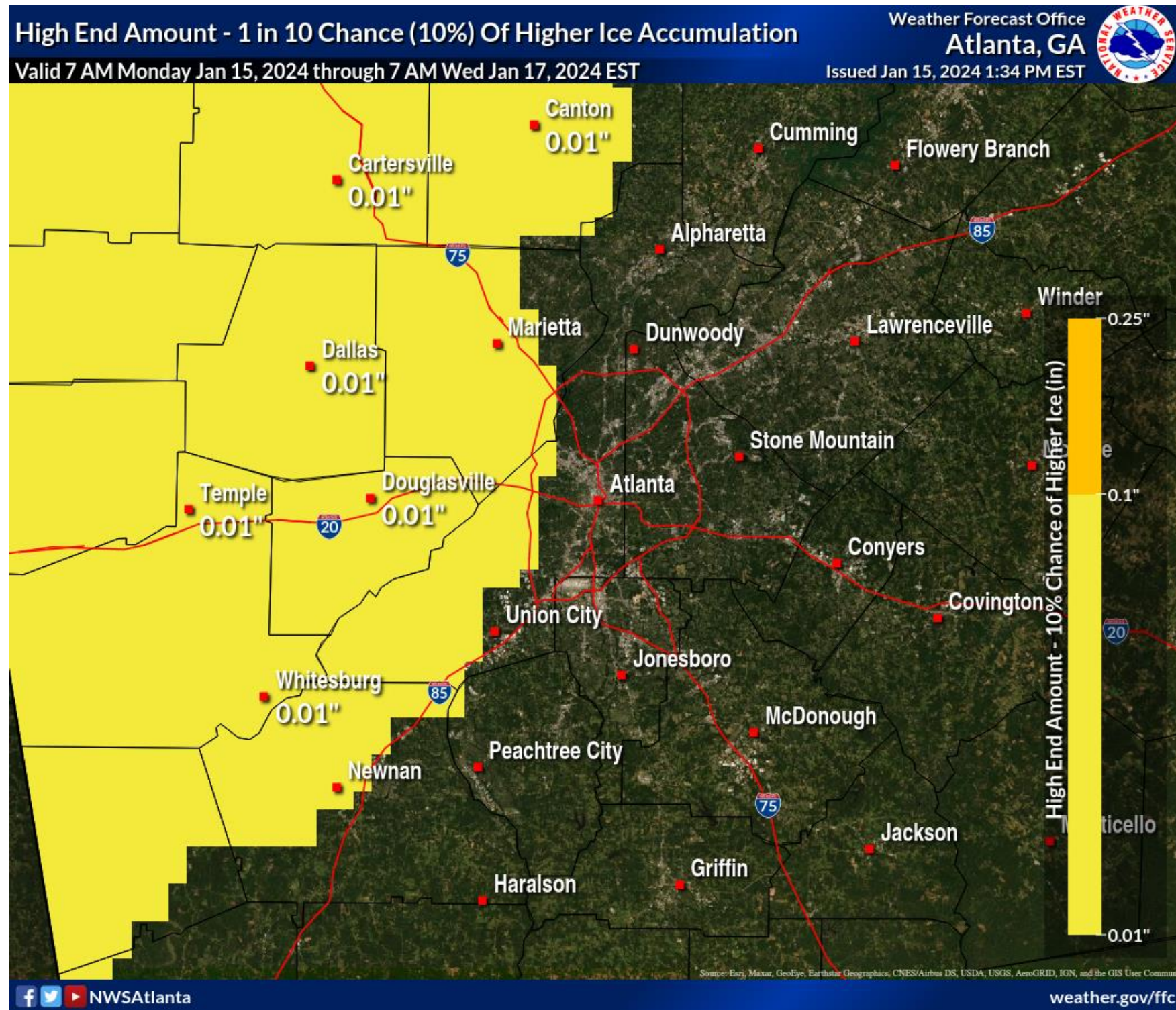




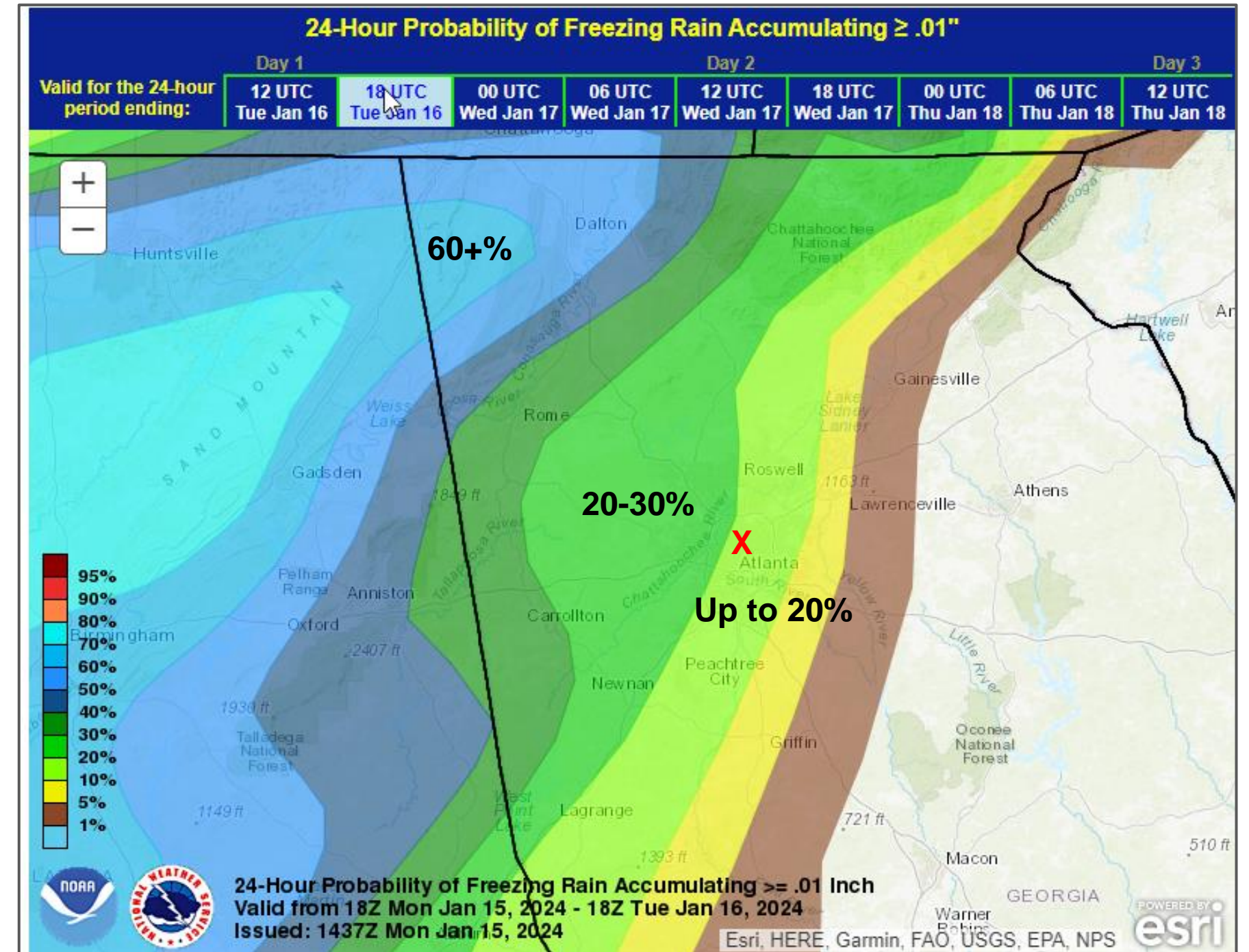
Potential Ice Accumulations

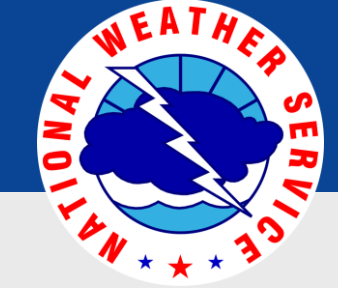
January 15, 2024
1:55 PM

Atlanta Metro / Reasonable Worst Case = 10% of seeing this much



WPC National Guidance showing chances (%) of seeing ≥ 0.01 " freezing rain through Tues morning

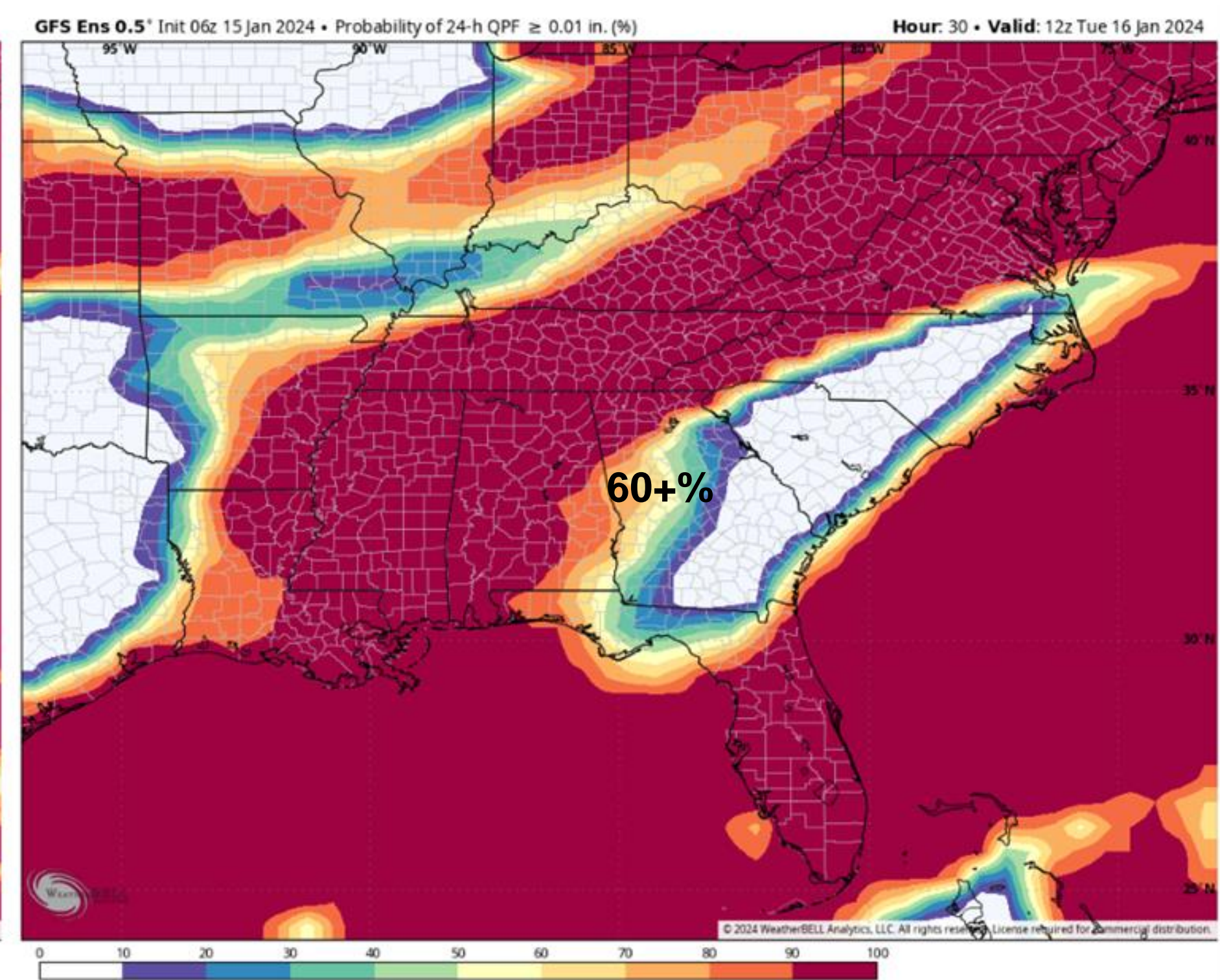
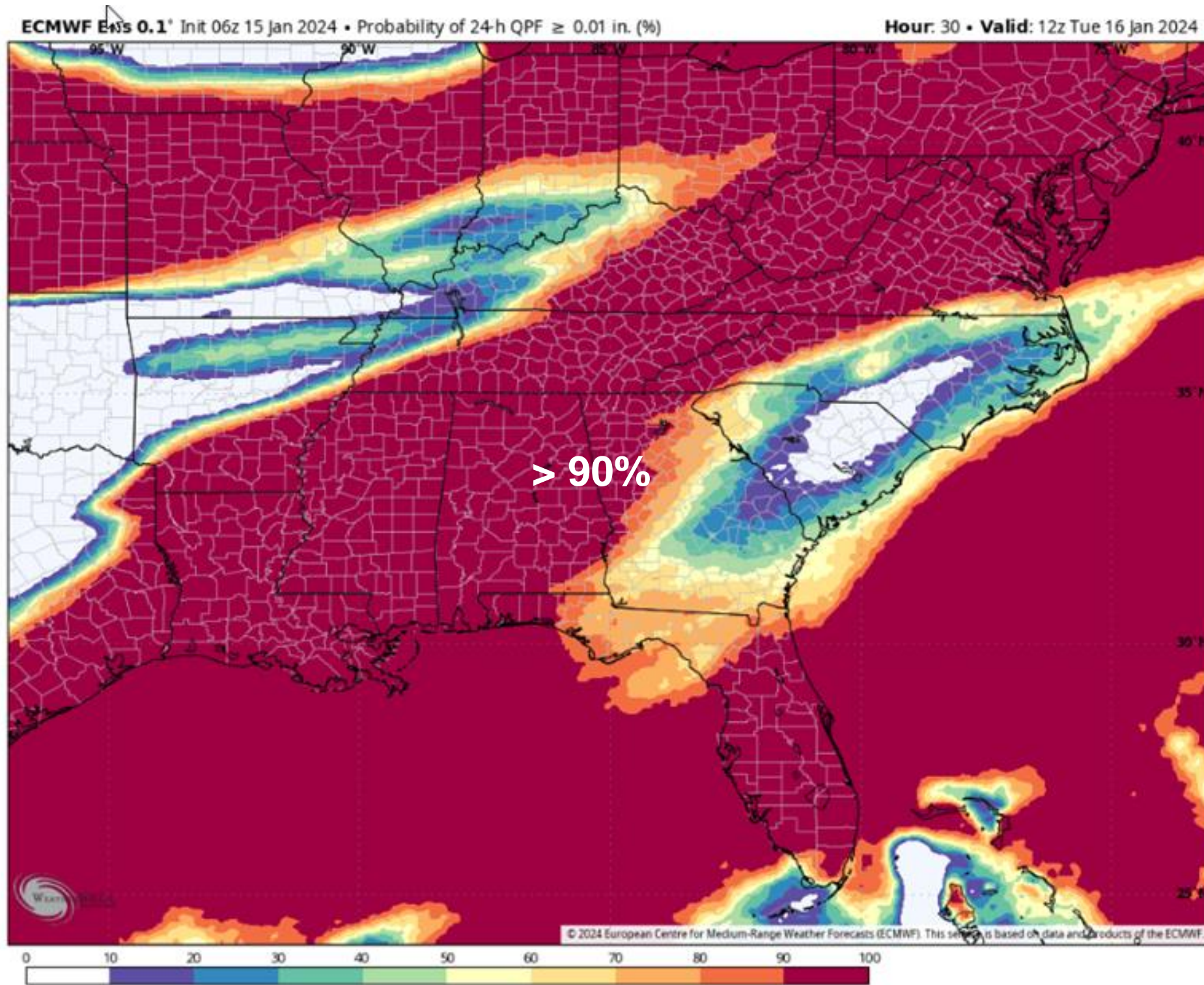


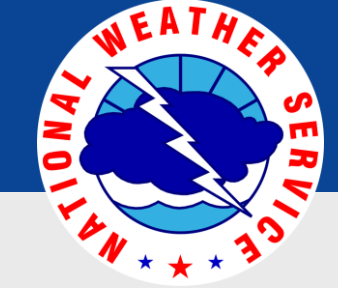


Additional Reason(s) of Concern...

January 15, 2024
1:55 PM

Ensemble Models showing high probability of at least some precip over
"Advisory" area through Tuesday morning





NWS Snow Forecast

January 15, 2024
1:55 PM

Through tonight

Northwest Georgia

Expected Snowfall - Official NWS Forecast

Valid 7 AM Mon Jan 15, 2024 through 7 AM Thu Jan 18, 2024 EST

Weather Forecast Office
Atlanta, GA

Issued Jan 15, 2024 4:20 AM EST



NWSAtlanta

weather.gov/ffc

Northeast Georgia

Expected Snowfall - Official NWS Forecast

Valid 7 AM Mon Jan 15, 2024 through 7 AM Thu Jan 18, 2024 EST

Weather Forecast Office
Atlanta, GA

Issued Jan 15, 2024 4:20 AM EST



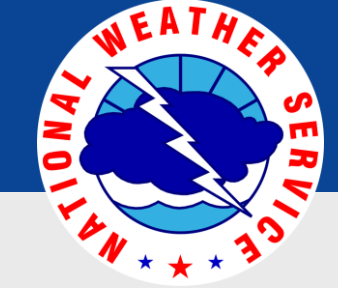
NWSAtlanta

weather.gov/ffc



National Oceanic and
Atmospheric Administration
U.S. Department of Commerce

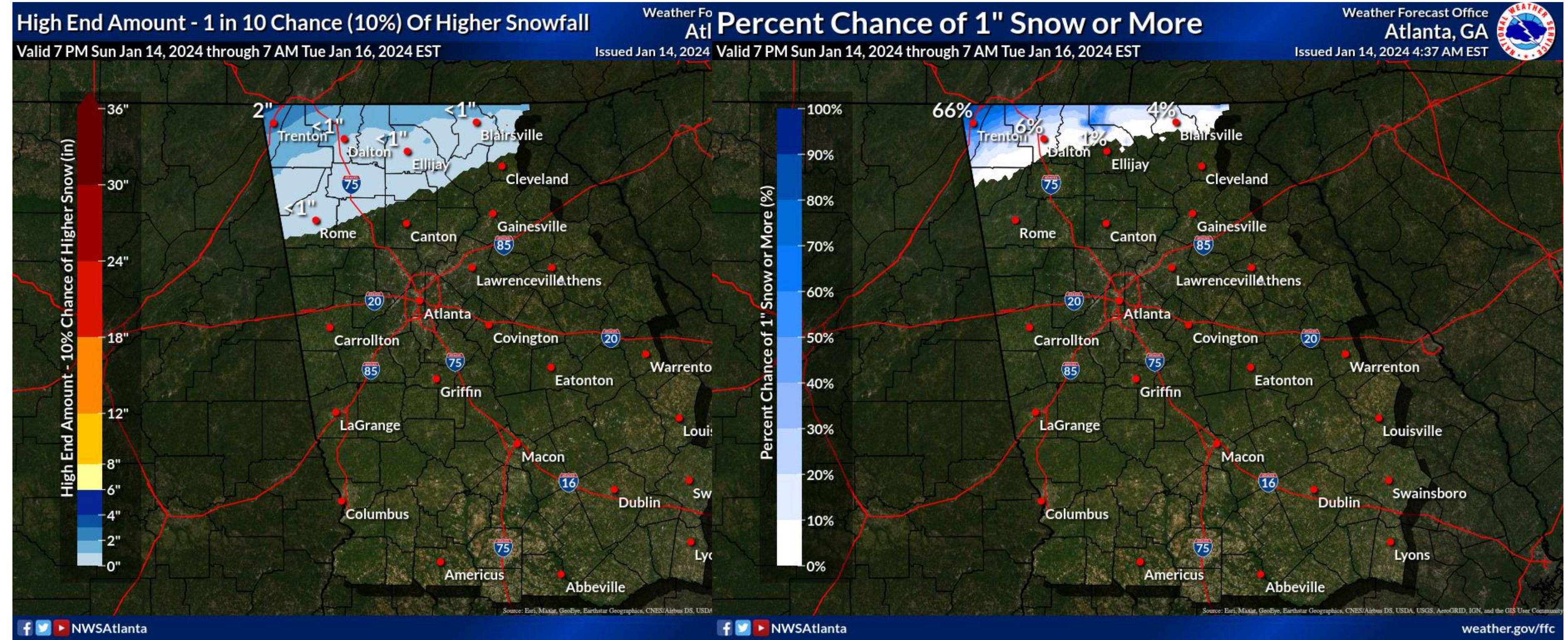
National Weather Service
Peachtree City, GA

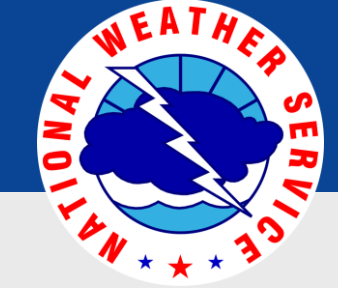


Snow Forecast (Range/Probability)

January 15, 2024
1:55 PM

**** Reasonable Worst Case (10% to see this much) ****





Low Temps and Min Wind Chills

January 15, 2024
1:55 PM

Overnight Tuesday into Wednesday Morning

Tomorrow Night's Low Temperature

Weather Forecast Office
Atlanta, GA

Issued Jan 15, 2024 3:59 AM EST

Tomorrow Night's Minimum WindChill

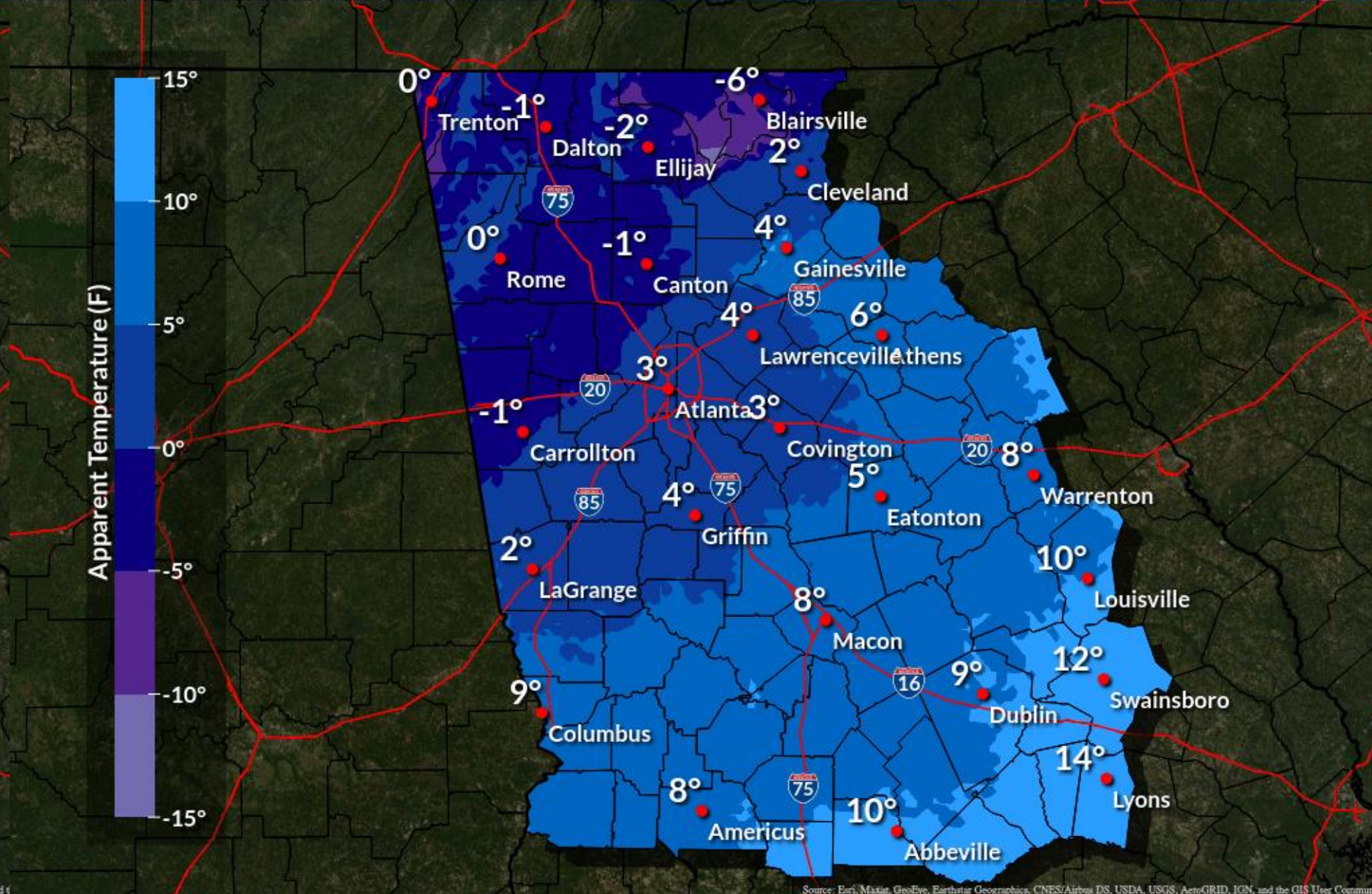
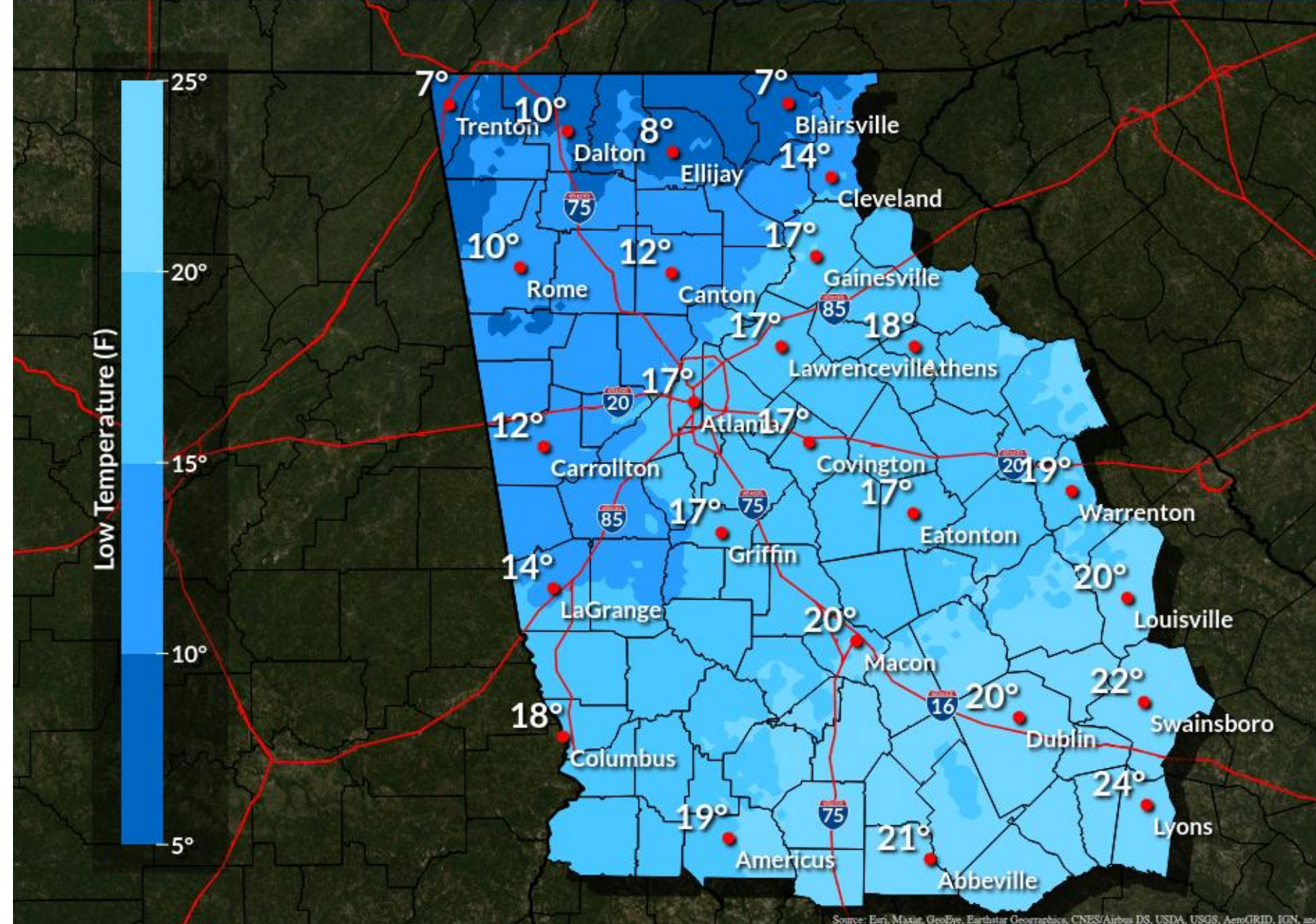
Weather Forecast Office
Atlanta, GA

Issued Jan 15, 2024 4:00 AM EST



Valid Tue 8:00PM through Wed 9:00AM EST

Valid Tue 7:00PM through Wed 7:00AM EST



Source: Eri, Maxar, GeoEye, Earthstar Geographics, CNES/Airbus DS, USDA, USGS, AeroGRID, IGN, and the GIS User Community

Source: Eri, Maxar, GeoEye, Earthstar Geographics, CNES/Airbus DS, USDA, USGS, AeroGRID, IGN, and the GIS User Community

NWSAtlanta

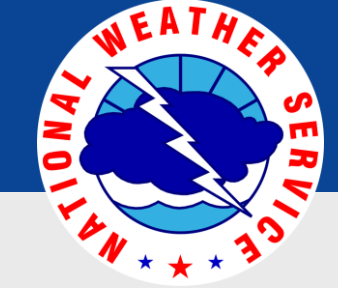
weath NWSAtlanta

weather.gov/ffc



National Oceanic and Atmospheric Administration
U.S. Department of Commerce

National Weather Service
Peachtree City, GA



Low Temps and Min Wind Chills

January 15, 2024
1:55 PM

Wednesday through Thursday Morning

Low Temperature Wednesday Night

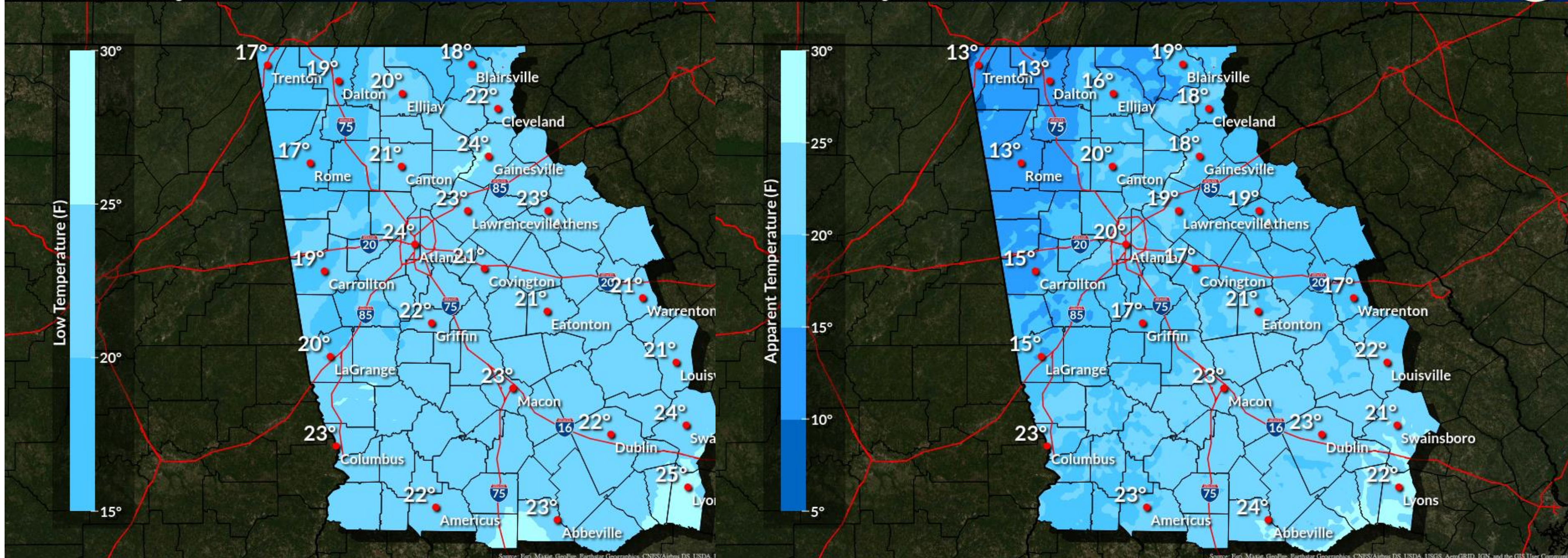
Valid Wed 8:00PM through Thu 9:00AM EST

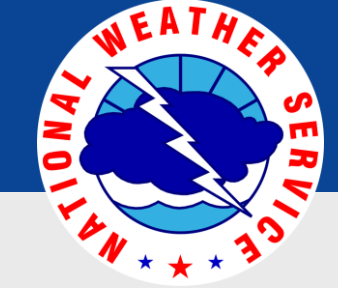
Weather For Atlanta Minimum WindChill

Issued Jan 15, 2024 4:00 AM EST Valid Thu 7:00AM through Fri 7:00AM EST

Weather Forecast Office
Atlanta, GA

Issued Jan 15, 2024 4:00 AM EST





High Temps - Wednesday/Thurs

January 15, 2024
1:55 PM

